



Banheira em Ferro Fundido Esmaltado
Cast Iron Enameled Bathtubs



COLLINS



Opções:

Fundo anti-deslizante e Exterior Pintado

Pés disponíveis em Cromado, Latonado, Níquel polido, Níquel mate, Aço polido, Latão e Pintados

Options:

Antislip and Exterior Painted

Feet available in Chrome, Brass plated, Polished nickel plated, Matte nickel plated, Polished steel, Solid brass and Painted

COLLINS

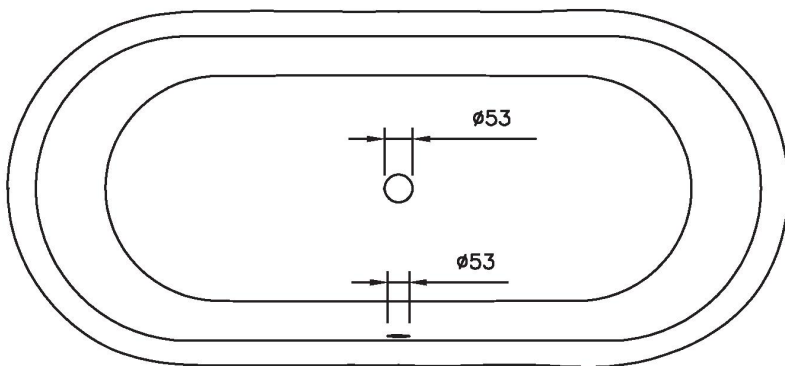
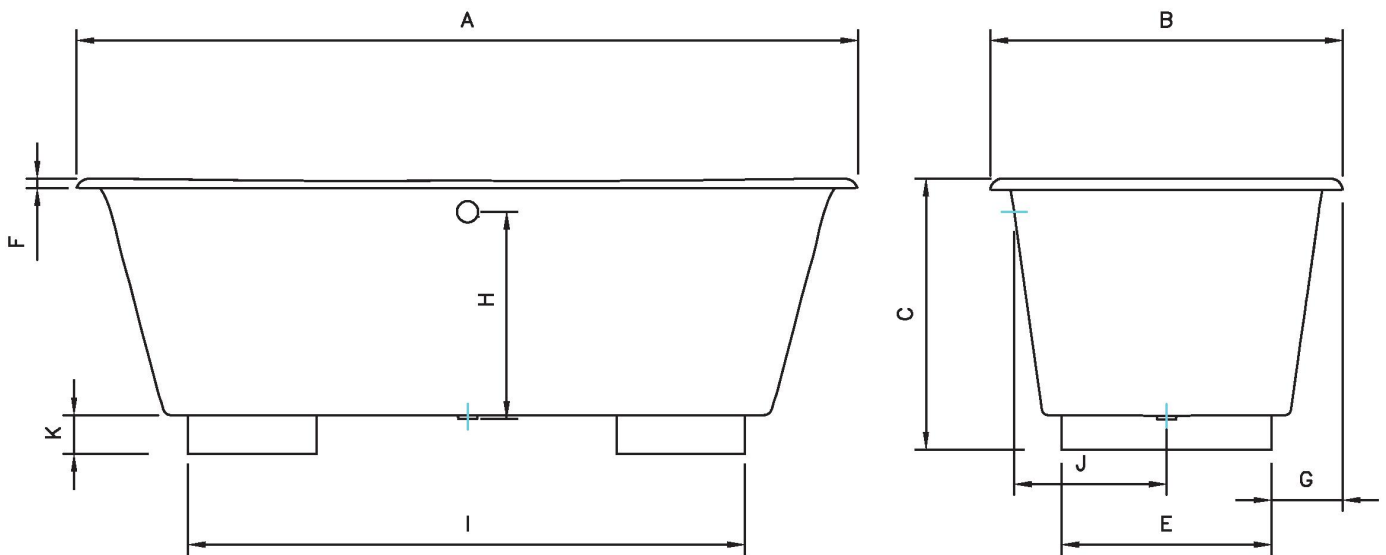
Dimensões em mm

Dimension in mm

REF.	A	B	C	E	F	G	H	I	J	K	VOL (L)	KG
1700	1700	785	615	465	32	160	485	1220	325	90	260	165

All the referred dimensions are susceptible to variations within the normal limits stated by the applicable standards.

Todas as dimensões referidas estão sujeitas a variações dentro dos limites normais estabelecidos pelas normas aplicáveis.



Overflow hole also available with 63mm